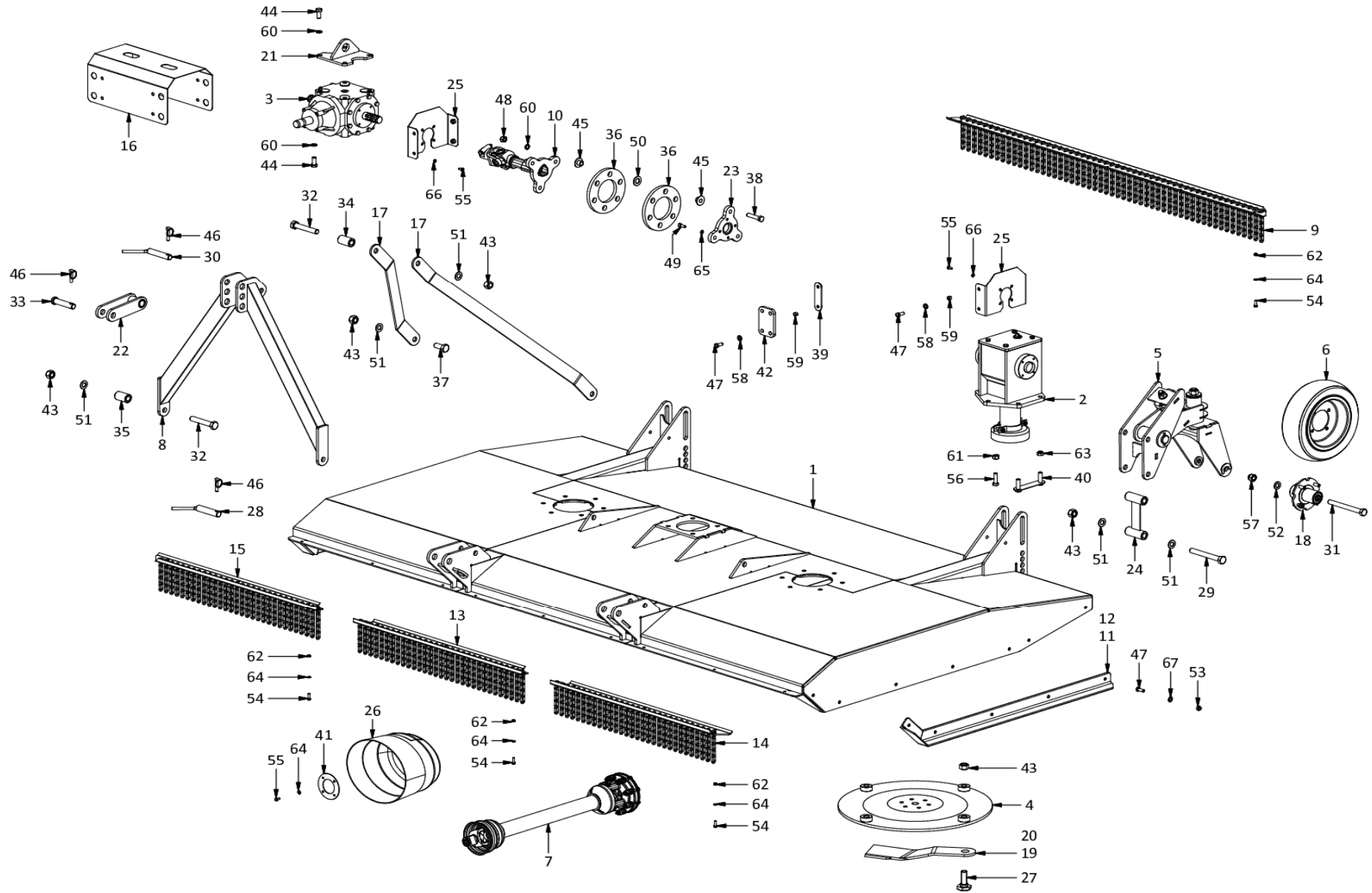


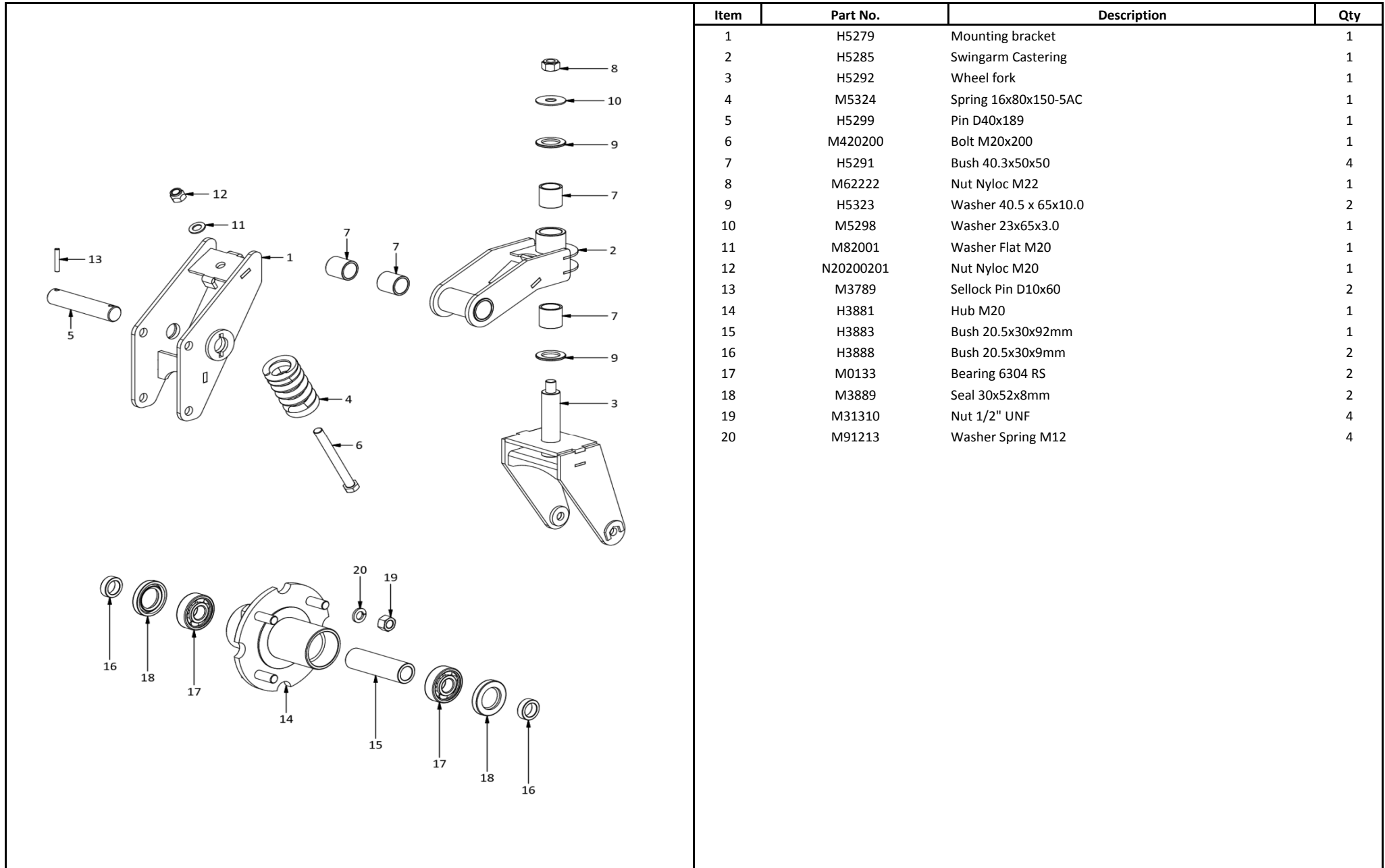
F60-300 Slasher
A0095



**F60-300 Slasher
A0095**

Item	Part No.	Description	Qty	Item	Part No.	Description	Qty
1	H5901	Deck Painted 3000	1	41	M5364	Backing plate M8-D95	1
2	H2620	Gearbox F60VF	2	42	M5341	Damper rubber	8
3	T279A-927901600	Gearbox T279A	1	43	M62222	Nut Nyloc M22	13
4	H5321	Disk 4-M22 D595.25	2	44	M41635	Bolt M16x35HT	8
5	H5278	Linkage Wheel	2	45	H5328	Bush Stepped 17x45x19.5	24
6	M3767	Wheel Laminated 4x8x15	2	46	FLP11	Lynchpin 11mm	4
7	T801010N112F42	PTO shaft T80 1010 112 F42	1	47	M41230	Bolt M12x30HT	42
8	H5300	Top mast	1	48	M31612	Nut M16	12
9	H5310	Chain curtain Rear	1	49	M3945	Cap screw M10x25	8
10	H5346	Shaft Intermed	2	50	M5350	Washer 24.5x45x3	12
11	H5907	Side protector Left	1	51	M82203	Washer 22x40x3	13
12	H5908	Side protector Right	1	52	M82001	Washer Flat M20	2
13	H5313	Chain curtain Centre	1	53	M61209	Nut Nyloc M12	10
14	H5316	Chain curtain Left	1	54	M40825	Bolt M8x25HT	14
15	H5319	Chain curtain Right	1	55	M40815	Bolt M8x16HT	20
16	M5905	Cover Intermed shaft	2	56	M41450	BoltM14x50HT	12
17	H5304	Mast Stay	2	57	N20200201	Nut NylocM20	2
18	H3880	Hub Assy 4-M20@D5in	2	58	M5342	Washer 13x24x3.0 Galv	32
19	H1822	Blade Banana 10x90x(510)-32.5	2	59	H5345	Bush 12.5x15.8x11	32
20	H1821	Blade Banana 10x90x(510)-32.5 RH	2	60	M91604	Washer Spring M16	20
21	H5307	Lifting bracket	1	61	M31410	Nut M14	12
22	H5325	Break link	1	62	M60809	Nut Nyloc M8	14
23	H5347	Profile	2	63	M61616F	Nut Nyloc M16F	12
24	H5361	Spacer Wheel adjuster	2	64	M80803	Washer Flat M8	18
25	H5906	Bracket	4	65	M91002	Washer Spring M10	8
26	M5360	PTO counter cone	1	66	M90813	Washer Spring M8	16
27	M52275	Blade bolt M22-10.9 Special	4	67	M81202	Washer Flat M12	10
28	H7115	Pin Btm link Cat2-125	2	68	M3116	Decal WARRANTY 2+2 WAARBORG.....	1
29	M422180	Bolt M22x180HT	4	69	M3176	Decal Bird Falcon Meduim	2
30	H0634	Pin Top link Cat2-125	1	70	M3003	Serial plate	1
31	M420200	Bolt M20x200	2	71	M3171	Decal Baie Belangrik Alvorens U Die	1
32	M422130	Bolt M22x130HT	3	72	M3170	Decal VERY IMPORTANT BEFORE USING.....	1
33	H0632	Pin Top link Cat2	1	73	M3168	Decal Bird FALCON Large	1
34	H5303	Bush 23x40x67	1	74	M3172	Decal DANGER STAY AWAY - ROTATING.....	2
35	H5359	Bush 23x40x64	2	75	M3173	Decal Lifting hook	1
36	M5351	Diaphram M16-PCD165	4	76	M3175	Decal PROUD TO BE SOUTH AFRICAN	1
37	M42250	Bolt M22x50HT	2	77	M3355	Decal F60/300 Slasher	1
38	M41675	Bolt M16x75HT	12	78	M3187	Decal ATTENTION If your tractor is	1
39	H5343	Nut set M12-2	8				
40	H2614	Ganged bolts M16Fx50	6				

**A0095 Wheel linkage & Hub
H5278 & H3880**



Item	Part No.	Description	Qty
1	H5279	Mounting bracket	1
2	H5285	Swingarm Castering	1
3	H5292	Wheel fork	1
4	M5324	Spring 16x80x150-5AC	1
5	H5299	Pin D40x189	1
6	M420200	Bolt M20x200	1
7	H5291	Bush 40.3x50x50	4
8	M62222	Nut Nyloc M22	1
9	H5323	Washer 40.5 x 65x10.0	2
10	M5298	Washer 23x65x3.0	1
11	M82001	Washer Flat M20	1
12	N20200201	Nut Nyloc M20	1
13	M3789	Sellock Pin D10x60	2
14	H3881	Hub M20	1
15	H3883	Bush 20.5x30x92mm	1
16	H3888	Bush 20.5x30x9mm	2
17	M0133	Bearing 6304 RS	2
18	M3889	Seal 30x52x8mm	2
19	M31310	Nut 1/2" UNF	4
20	M91213	Washer Spring M12	4

**Gearbox F60VF
H2620**

	Item	Part No.	Description	Qty
	1	H2632	Housing Extended F60V	1
	2	H2612	Shaft Output Extended	1
	3	H2631	Shaft Input F60VF/VX	1
	4	H2609	Gear Bevel Z27/z10	1
	5	H2608	Gear Bevel Z20/z6	1
	6	H1323	Dust cover	1
	7	M2624	Cover	1
	8	M1333	Bearing Tapered roller 32009	2
	9	M1371	Bearing Deep groove 6205	1
	10	H1378	Retainer Domed	1
	11	H2633	Washer 35x52x5	1
	12	M41045	Bolt M10x45HT	2
	13	M41025	Bolt M10x25HT	4
	14	M1332	Bearing Tapered roller 32008	1
	15	M1326	Seal Felt	1
	16	M1334	Plug + Dipstick	1
	17	M1375	Circlip Internal INT0750	1
	18	M1374	Circlip Internal INT0680	1
	19	M31007	Nut M10	2
	20	M1319	Nut Slotted 1 UNF	1
	21	M1369	Plug Welsh type 52x10	1
	22	M1343	Washer 40x26x2	1
	23	M1361	Seal Radial lip 68x40x8	1
	24	M2617	Gasket F60	1
	25	M2634	Locking nut KM7	1
	26	M1416	Split pin B5x60	1
	27	M1366	Seal Radial lip 75x55x8	2
	28	M1372	Circlip Internal INT0520	1
	29	M1365	Load washer Wave type EPL50	1
	30	M1364	Load washer Wave type EPL44	1
	31	M2635	MB(L) locking washers-Bearing accessories	1
	32	M1368	Seal protector	1
	33	M3231	Gear oil Renolin CLP1000	A/R

A/R = As required